

LUBE MINDER® AUTOMATIC OILER

Proper lubrication of chains and sprockets is highly recommended by roller chain manufacturers and is critical for increasing the life of your machines components. The Lube Minder® automatic oiling system ensures that chains are properly oiled while they are warm and running. Systems are available in complete kits or can be custom configured to meet the needs of your application.

UNIVERSIAL OILER KITS



1-4 Brush Universal Kit P/N: 170-0624

Qty	Description
1	8 Port Pump
4	Manifold Valve Holder
4	Brush
1	Oil Reservoir Filter Screen
3	Bracket - 90° Long
2	Bracket - Flat Long
1	Bracket - 90° Short
2	Bracket - Flat Blank
1	Bracket - Oiler Pump Mounting
7	1/8" NPT Plug
1	2 Quart Reservoir Tank
5	Manifold Ferrule
5	Sleeve Nut
1	Restrictor Elbow
1	(5') 5/8" ID Pump Tubing
1	Universal Lube Minder Hardware Kit
10	(1') 1/4" Black Poly Tubing
2	50' Nylon Brush Tubing



5-8 Brush Universal Kit P/N: 170-0628

Qty	Description
1	8 Port Pump
8	Manifold Valve Holder
8	Brush
1	Oil Reservoir Filter Screen
6	Bracket - 90° Long
4	Bracket - Flat Long
2	Bracket - 90° Short
4	Bracket - Flat Blank
1	Bracket - Oiler Pump Mounting
3	1/8" NPT Plug
1	2 Quart Reservoir Tank
9	Manifold Ferrule
9	Sleeve Nut
1	Restrictor Elbow
1	(5') 5/8" ID Pump Tubing
1	Universal Lube Minder Hardware Kit
10	(1') 1/4" Black Poly Tubing
2	50' Nylon Brush Tubing

SPARE PART KITS



Add a Line / Slice Kit P/N: 170-0600

Qty	Description
2	5/32" Union Lock
2	5/32" Union Tee
1	50' Nylon Brush Tubing
8	Manifold Ferrule
4	Sleeve Nut
1	Bracket - Short Angled
1	Bracket - Flat Blank
1	Bracket - 90° Long
1	Brush
1	5/32" In Line Check Valve
5	Taptite Bolt for Bracket
3	Oiler Hose Clamp
1	Check Valve Manifold Assembly
10	(1') Black Poly Tubing



Line Kit with Shutoff P/N: 170-0601

Qty	Description
1	1/8" Female Ball Valve
1	1/8" NPT Hex Nipple
1	Check Valve Manifold Assembly
1	5/32" Coupling Insert
1	5/32" Coupling Body
1	Brush
1	50' Nylon Brush Tubing
1	Bracket - Flat Blank
1	Bracket - Short Angled
1	Bracket - 90° Long
4	Taptite Bolt for Bracket
10	(1') Black Poly Tubing



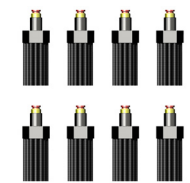
Restrictor Kit P/N: 170-0602

Qty	Description
5	Check Valve Manifold Assembly
5	Orifice - Medium
5	Orifice - Small
10	Manifold Ferrule
5	Sleeve Nut



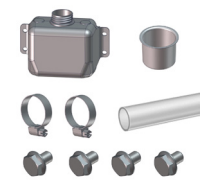
Mini Maintenance Kit P/N: 170-0607

Qty	Description
3	Brush
12	Manifold Ferrule
4	Sleeve Nut
2	Union Lock
1	(50') Nylon Brush Tubing
1	Reservoir Tank Cap



Brush Kit P/N: 170-0604

Qty	Description
8	Brush



Tank Assembly Kit P/N: 170-0605

Qty	Description
1	2 Quart Reservoir Tank
1	(3') 5/8" ID Pump Tubing
1	Oil Reservoir Filter Screen
2	5/16" - 7/8" Hose Clamp
4	Taptite Bolt



Universal Hardware Kit P/N: 170-0621

Qty	Description
1	Band Clamp - Pump
10	1/2"-20 Hex Nut
20	Taptite Bolt
6	Hose Clamp - Reservoir Tank
6	1/4"-20 Hex Nut
6	1/4" Washer Split Lock
6	1/4"-20 x 3/4" Hex Head Cap Screw
2	5/16"-7/8" Hose Clamp
25	Cable Ties, Oiler Tubing
1	Drill Bit - 7/32"

GREASE MINDER BANK SYSTEM

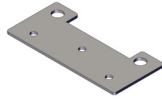
Failure to grease all zerk points on today's advanced equipment will cause machinery to become less efficient and eventually break down. The Grease Minder bank system is designed to maximize convenience by creating a central location for all zerk points. No need to spend time crawling around your equipment. Install a Grease Minder system and reduce your daily labor. The Grease Minder is available in complete kits or can be custom configured to meet the needs of your application.

GREASE BANK SYSTEM - LOW PRESSURE

Low pressure grease systems are rated for 650 psi and must be operated with piston-type grease guns. If you are operated at a higher pressure, build with high pressure grease fittings.



Grease Bank - 13 Ports
PN: 21999-0419



Mounting Plate - Bank
PN: 170-2038



1/8" NPT Grease Zerk
PN: 36-110



1/4" x 1/8" NPT Straight
PN: 68pl-4-2



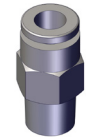
1/4-28 Taper x 1/4" Straight
PN: 21999-0413



1/4-28 Taper x 1/4" 90°
PN: 244054



1/8" Taper x 1/4" Elbow
PN: 20-068N



1/8" Taper x 1/4" Straight
PN: 68pl-4-2-TP



Low Pressure Tubing
PN: 21999-0433



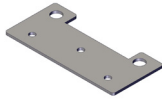
Low Pressure Grease Filled Tubing
PN: 21999-0433-GF

GREASE BANK SYSTEM - HIGH PRESSURE

High pressure grease systems are rated for 3480 psi and may be operated with various grease guns.



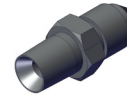
Grease Bank - 13 Ports
PN: 21999-0419



Mounting Plate - Bank
PN: 170-2038



1/8" NPT Grease Zerk
PN: 36-110



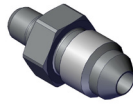
#4 JIC to 1/8" Adaptor
PN: 2404-4-2



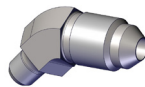
#4 JIC to 1/8" Adaptor 45°
PN: 2503-4-2



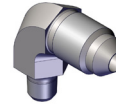
#4 JIC to 1/8" Adaptor 90°
PN: 2501-4-2



#4 JIC to 1/4-28 Taper
PN: 21999-0682



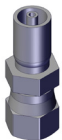
#4 JIC to 45° 1/4-28 Taper
PN: 21999-0684



#4 JIC to 90° 1/4-28 Taper
PN: 21999-0683



1/8" Male Hose End
PN: 113CY-2-2



1/8" Female Hose End
PN: 106CY-4-2



1/8" Male Fixed Hose End
PN: 101CY-2-2



High Pressure Tubing
PN: 100R7



High Pressure Grease Filled Tubing
PN: 21999-0686